

Adolescent Health Across the Globe:

New understandings, new problems, new opportunities

National Adolescent Health Consultation
New Delhi, January 2014

George Patton

Professor of Adolescent Health Research,
University of Melbourne

Young people on the global agenda



THE STATE OF THE WORLD'S
EXECUTIVE SUMMARY



Adolescence
An Age of Opportunity

unite for
children



THE LANCET

www.thelancet.com

Adolescent Health

An Executive Summary for The Lancet Series



"Failure to invest in the health of the largest generation of adolescents in the world's history jeopardises earlier investments in maternal and child health, erodes future quality and length of life, and escalates suffering, inequality, and social instability."

unicef



AID
AMERICAN PEOPLE



YOUTH IN DEVELOPMENT

Realizing the
Demographic Opportunity

USAID POLICY

YOUTH

OCTOBER 2012

Why are young people on the agenda?

1. New understandings

- Shifts in adolescent development
- Adolescence and health

2. New problems

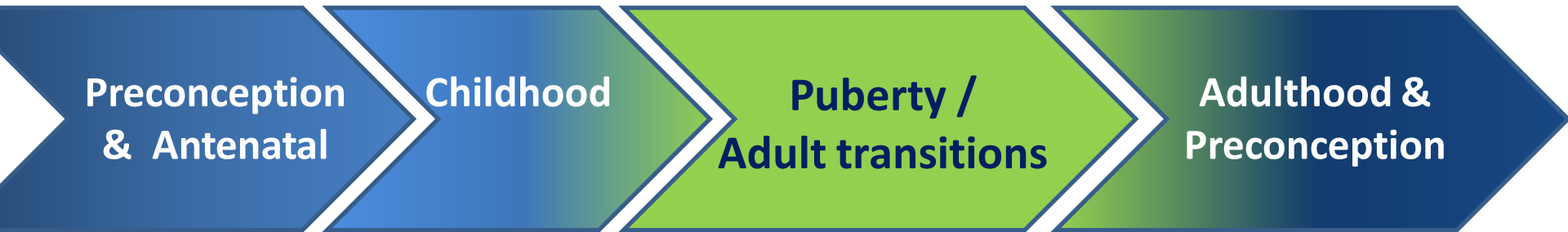
- Visibility & data
- Shifts in health priorities

3. New opportunities

- Protective systems
- Health interventions

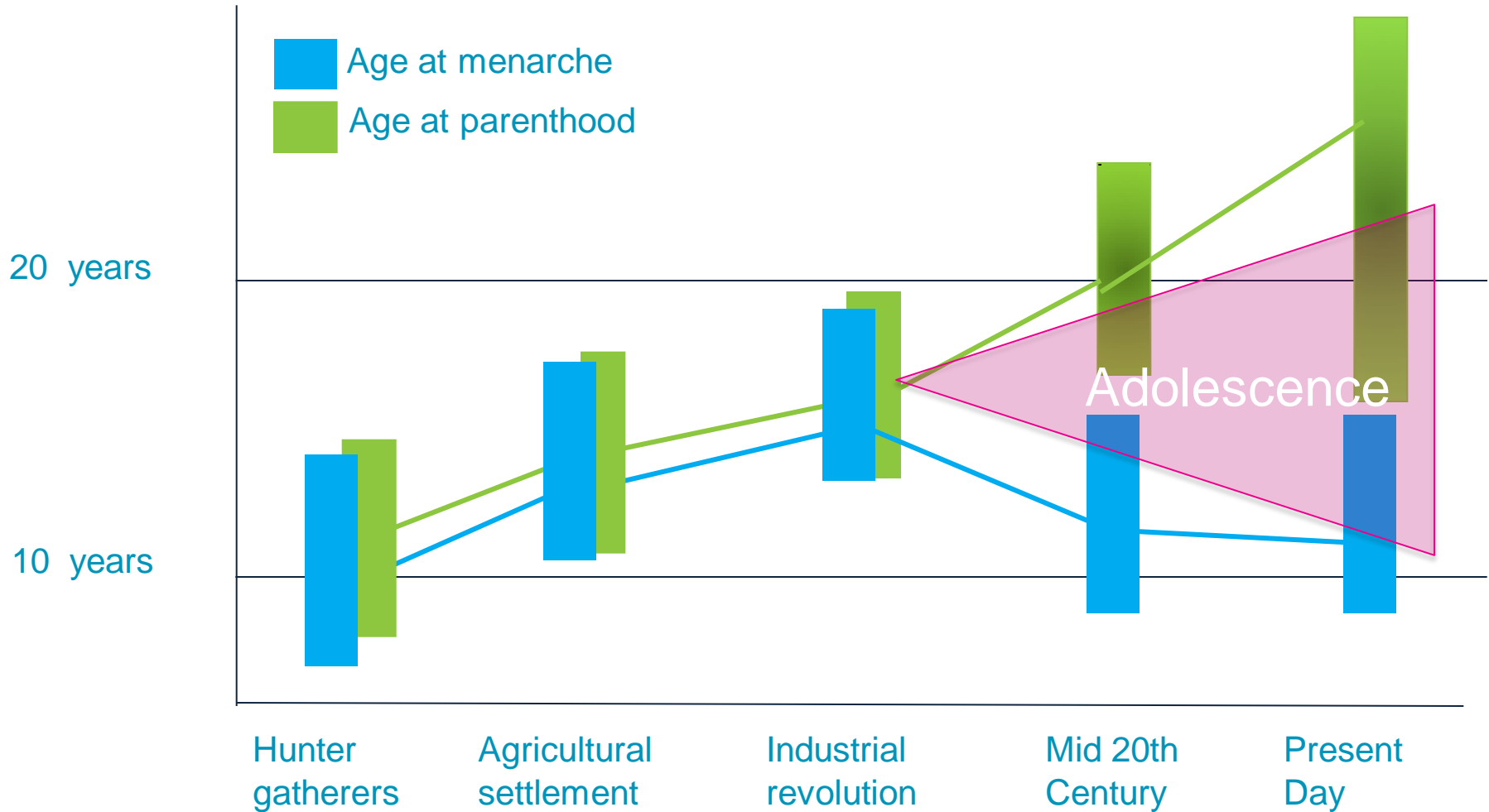
4. Economic reasons for adolescent health

Adolescence within the life-course



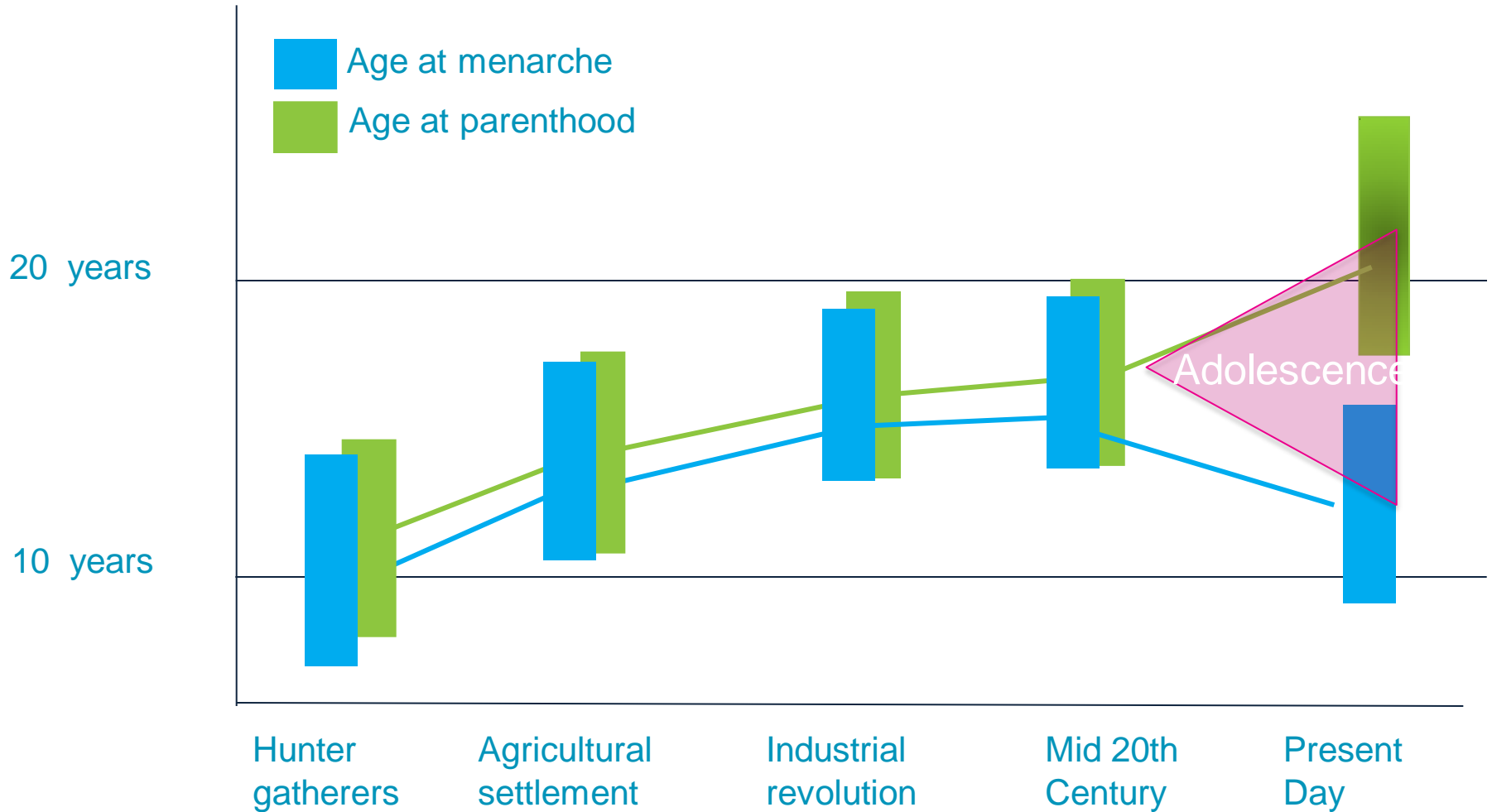
Evo-devo and adolescence:

High income countries



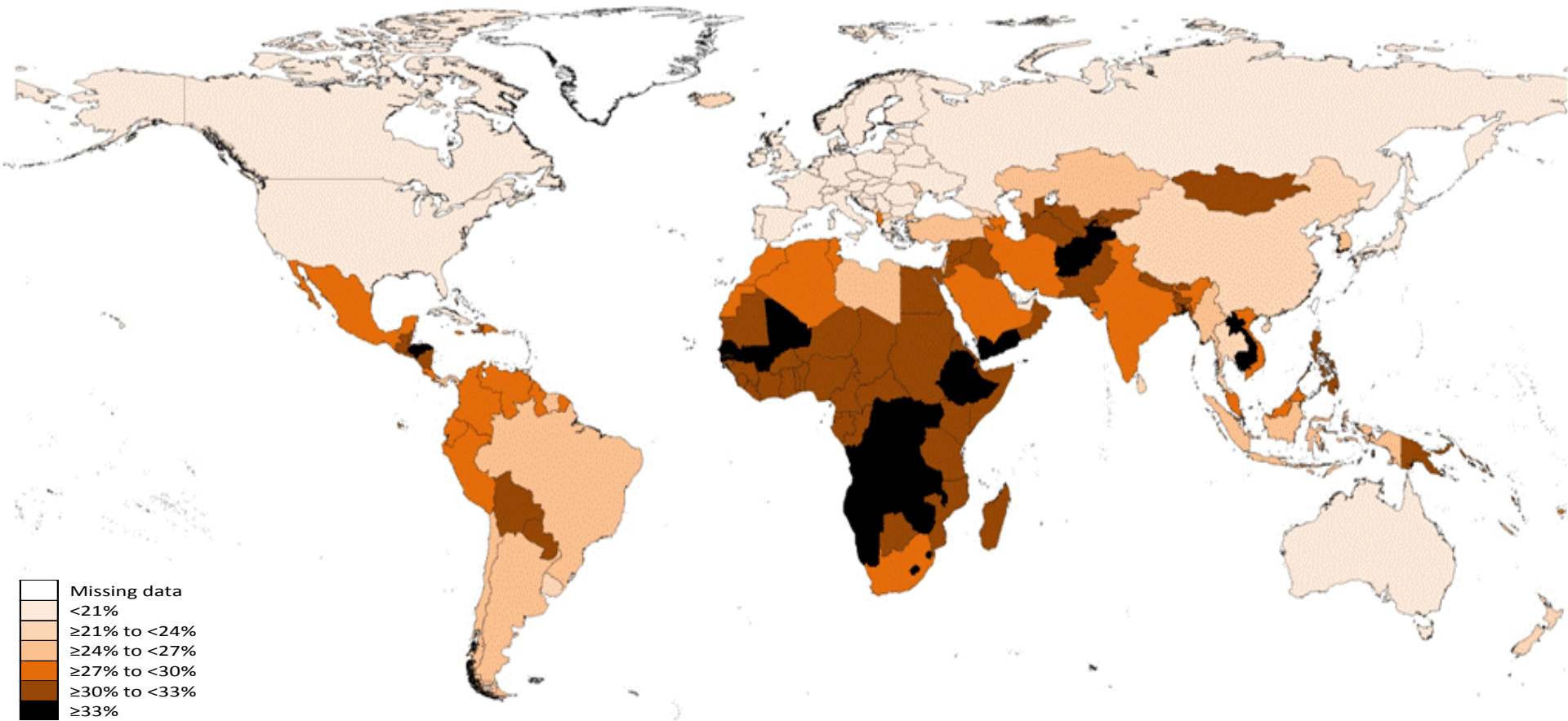
Evo-devo and adolescence:

Low & middle income countries



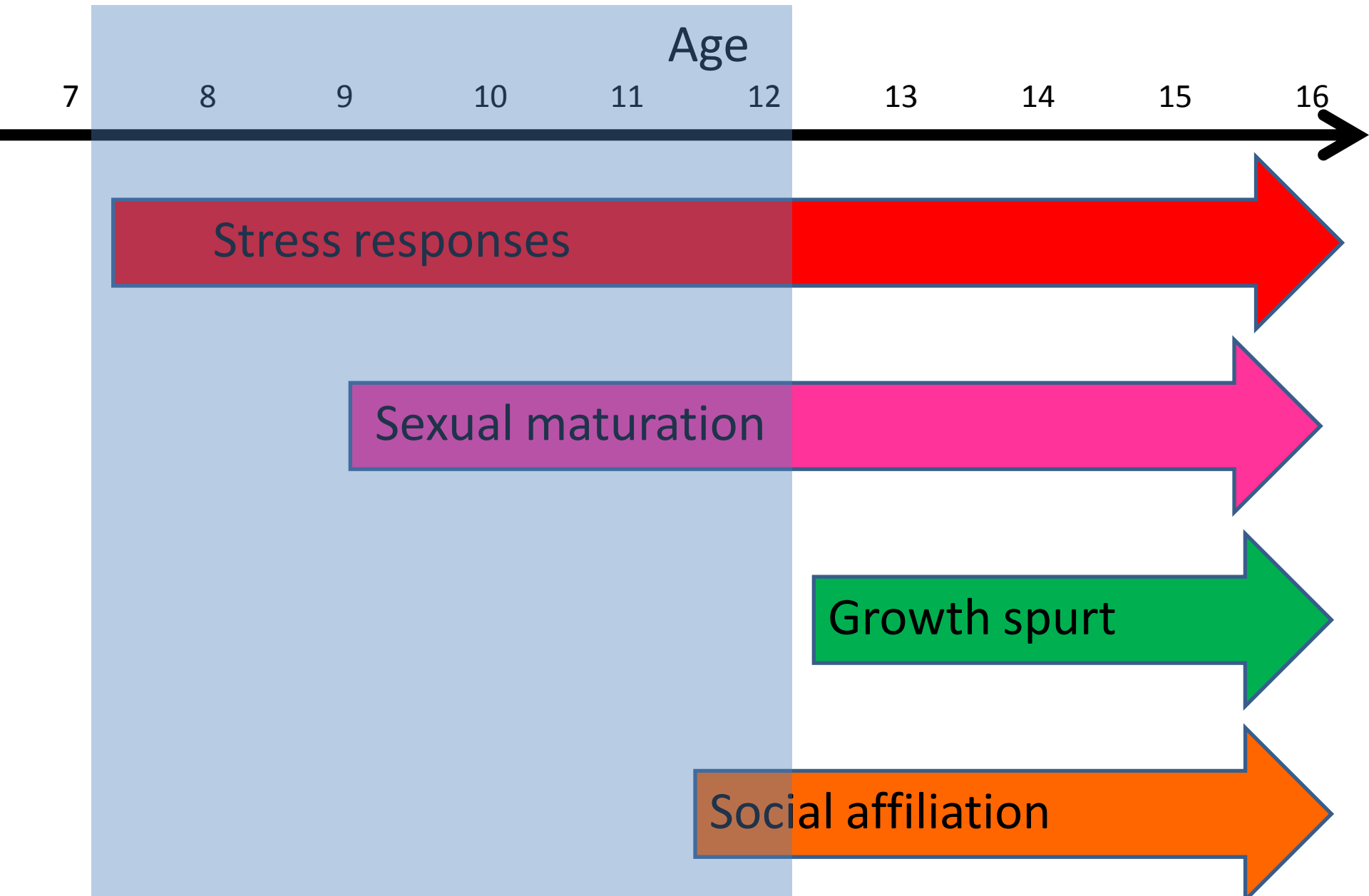
Adapted from Gluckman

Nine in ten adolescents live in LMIC

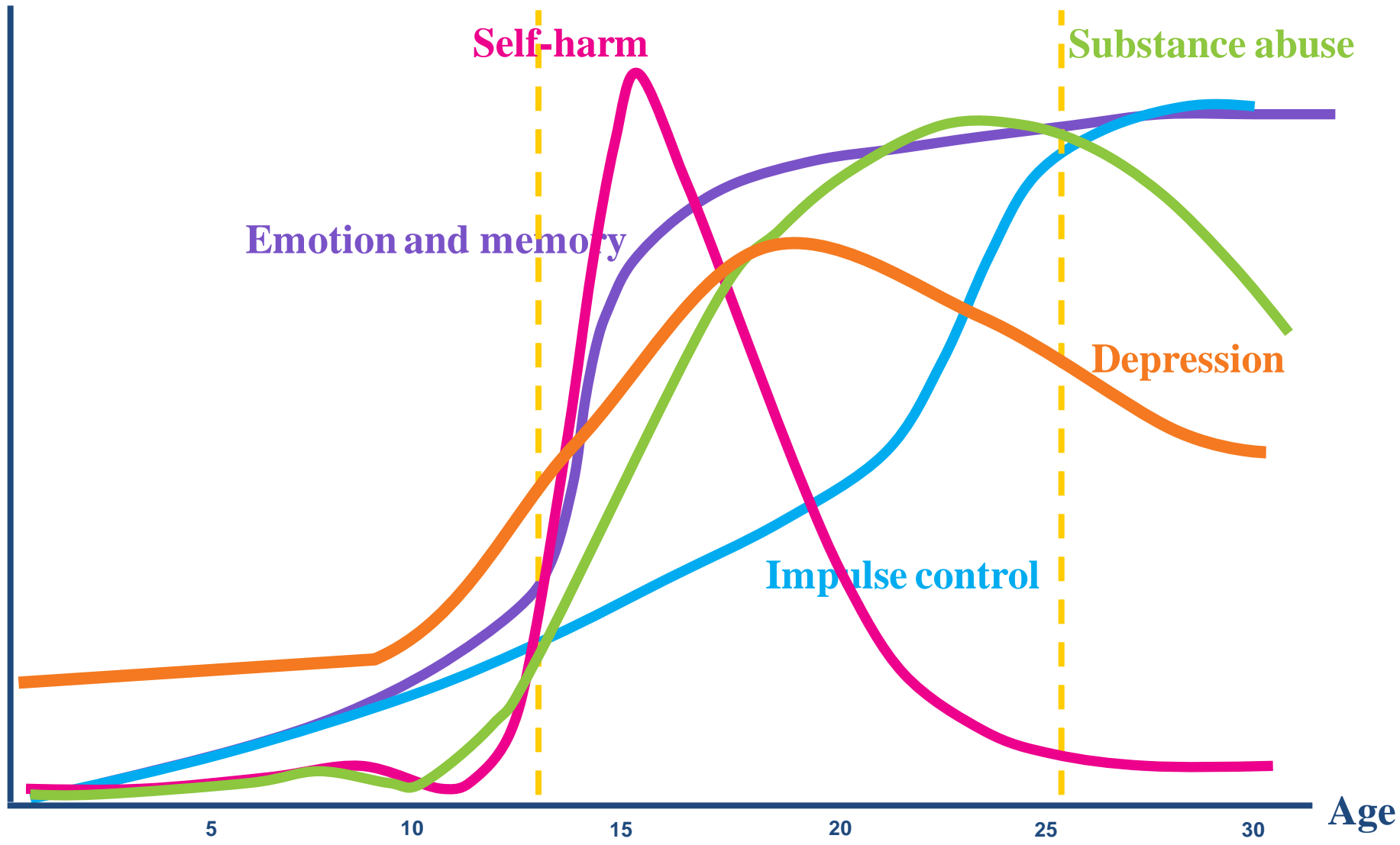


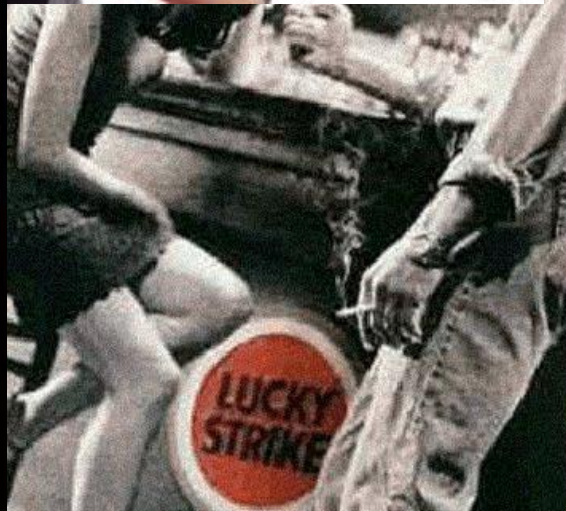
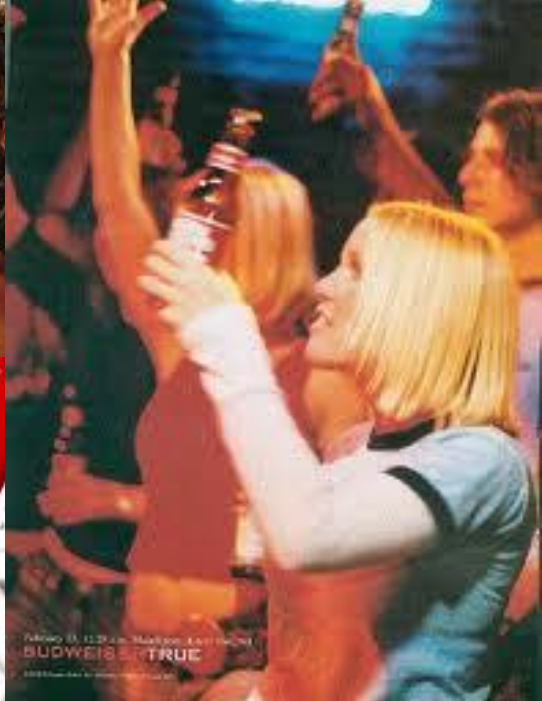
* Source: Population Division of the Department of Economic and Social Affairs of the United Nations Secretariat, World Population Prospects

New understandings: biology of puberty

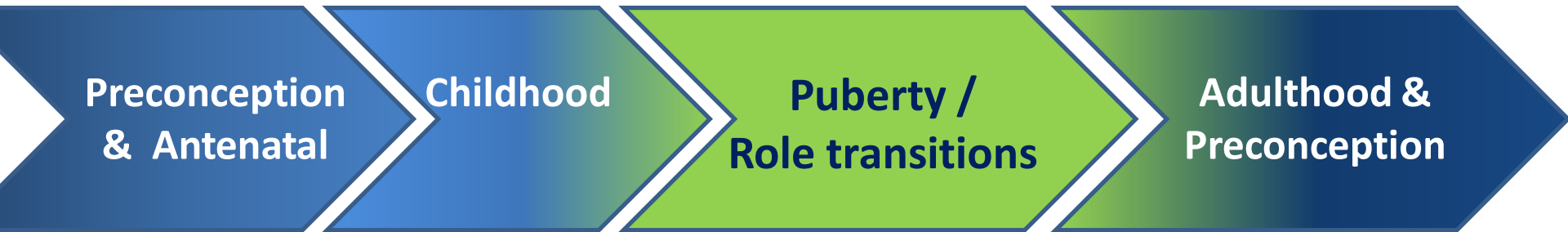


New understandings: brain development

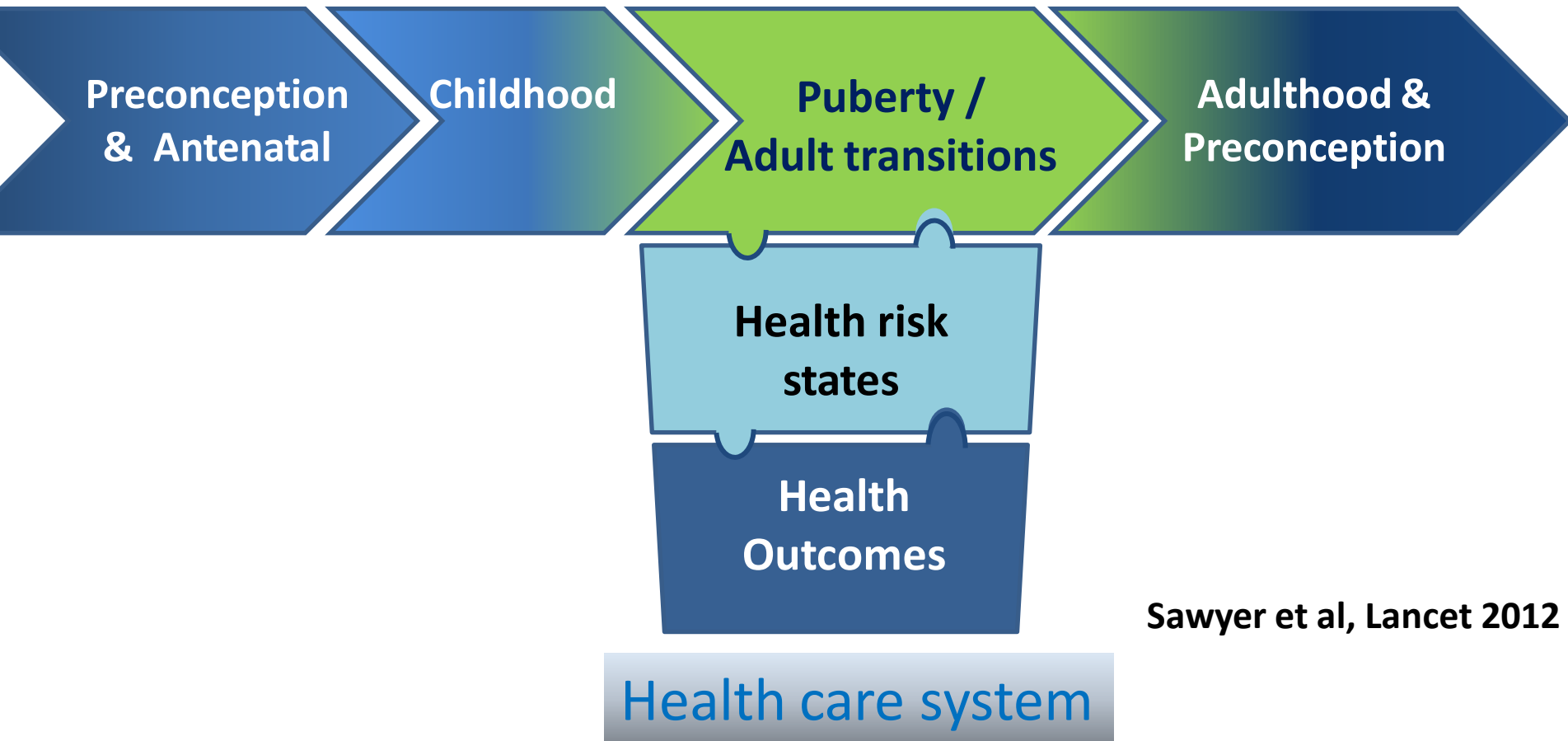




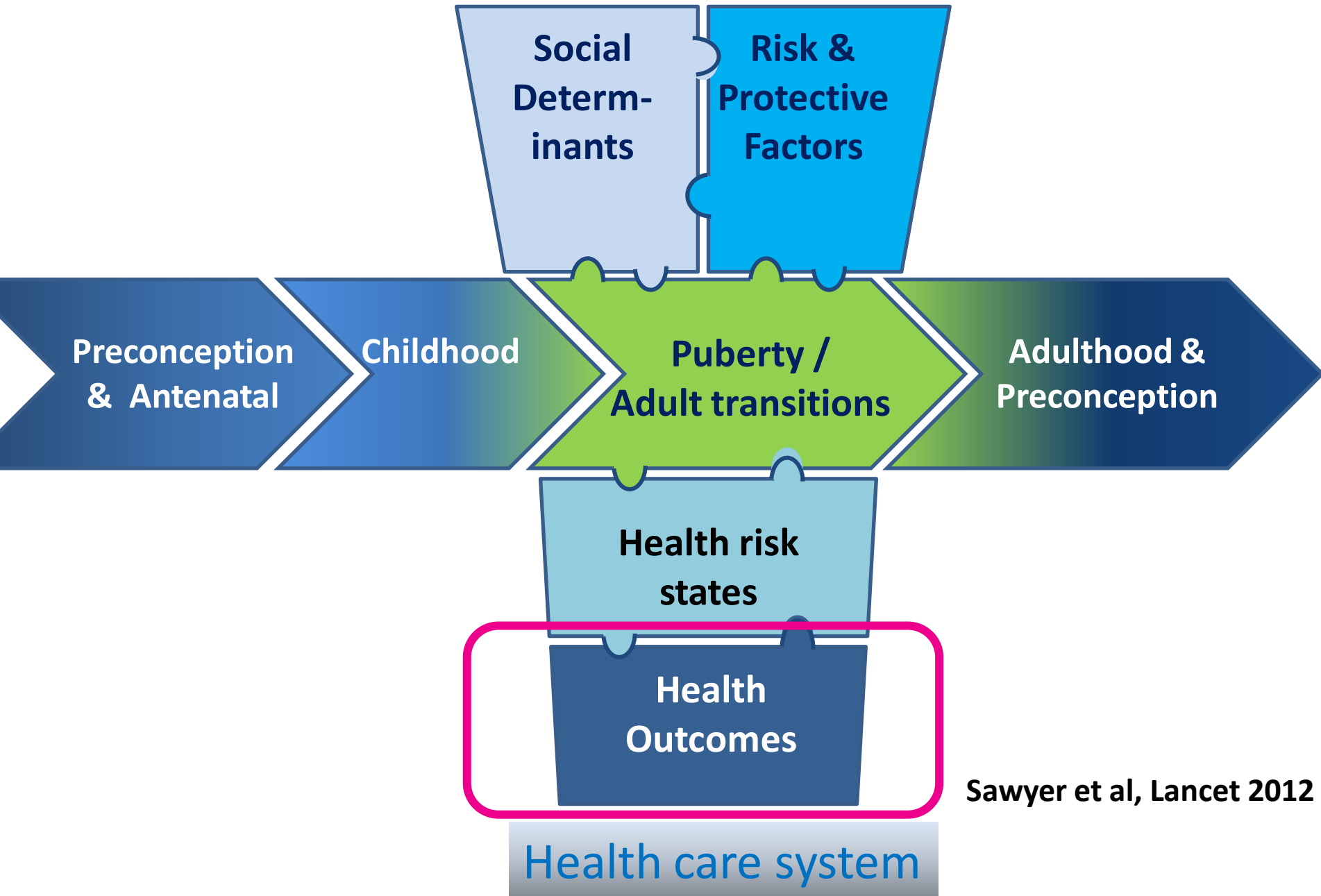
Visualising adolescent health within the life-course



Visualising adolescent health within the life-course



Social, educational and economic policies



Sawyer et al, Lancet 2012

A Good Health Indicator

Valid

- Public health importance
- Close to construct & measurable

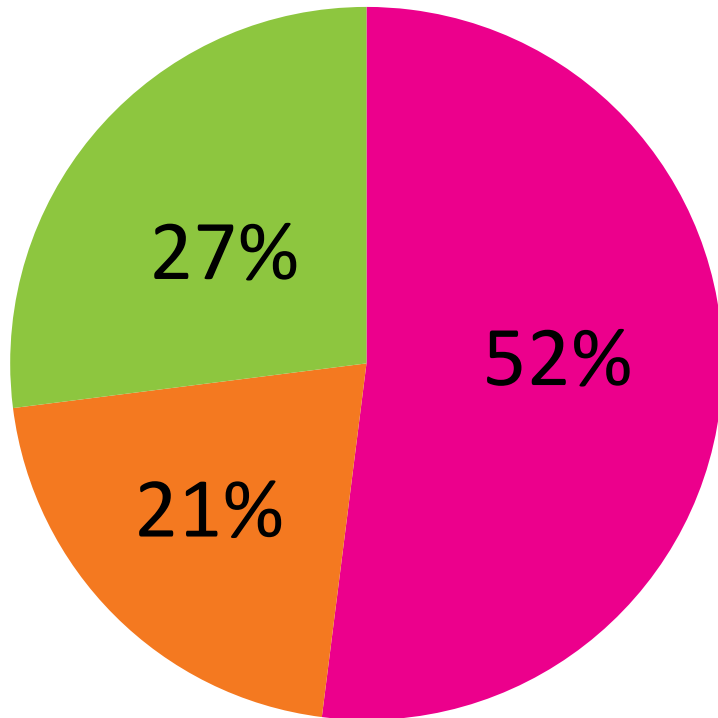
Impact

- Relevance to major policies
- Compelling and understandable
- Modifiable
- Available over time

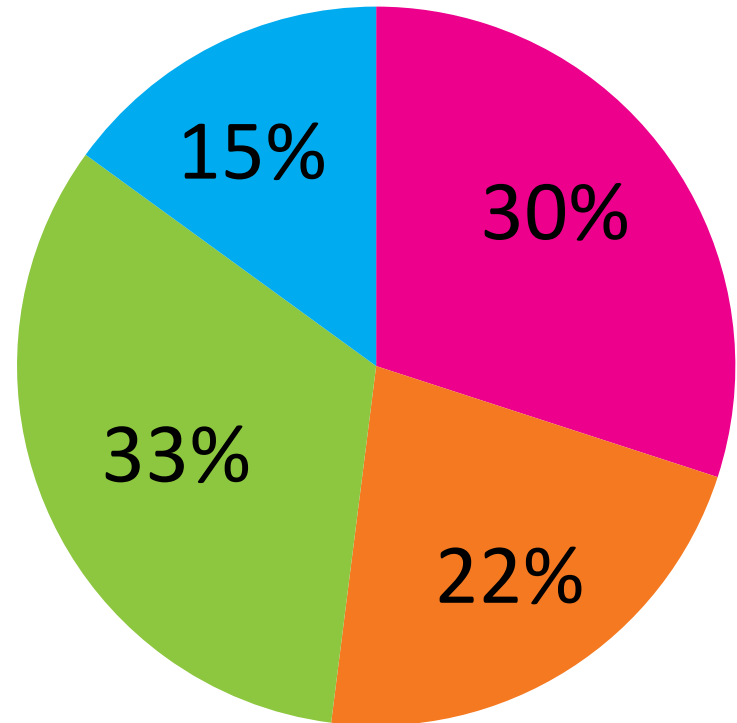
More than sexual and reproductive health

How do 2.6 million young people die each year?

Male deaths aged 10-24

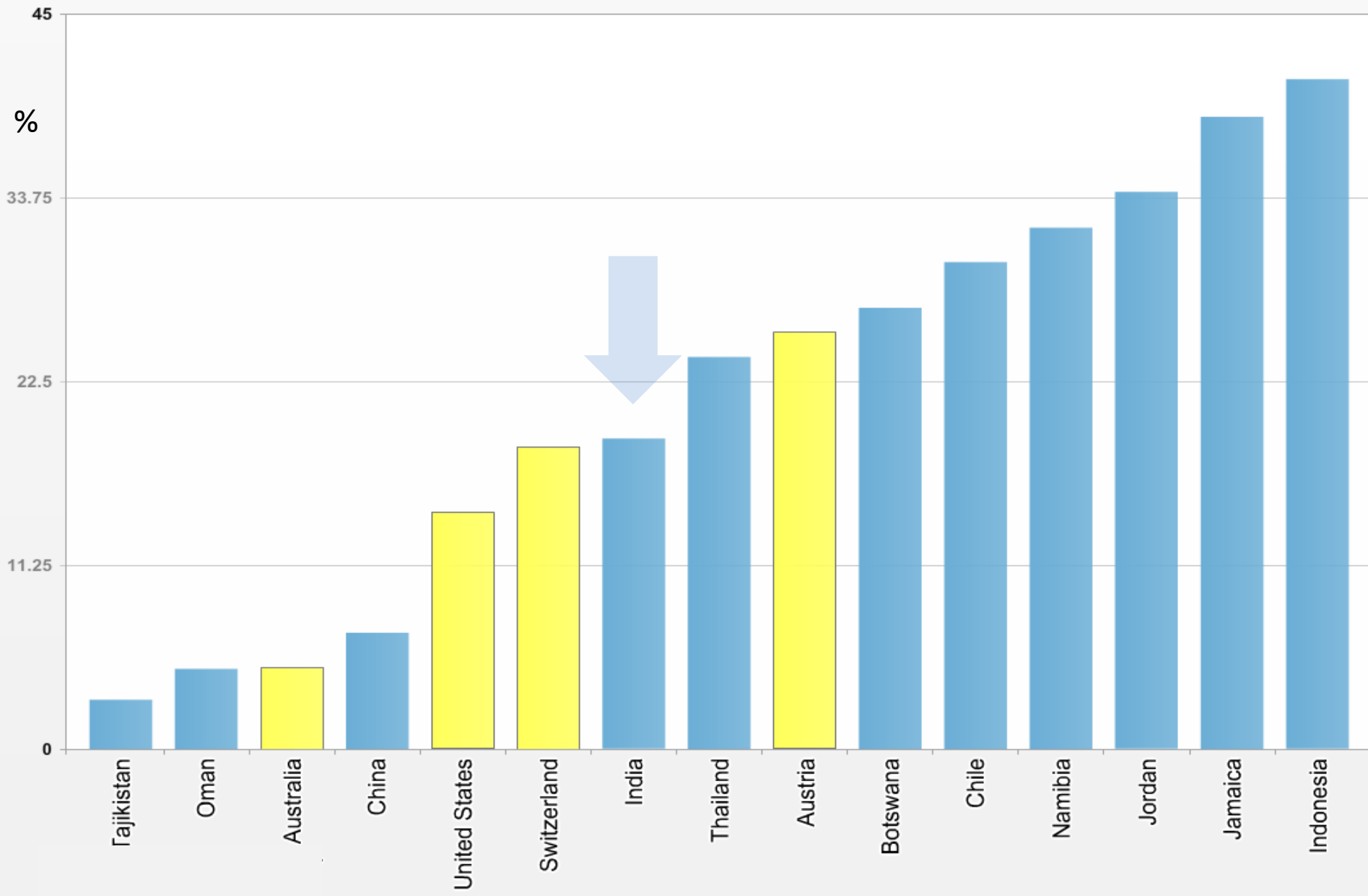


Female deaths aged 10-24



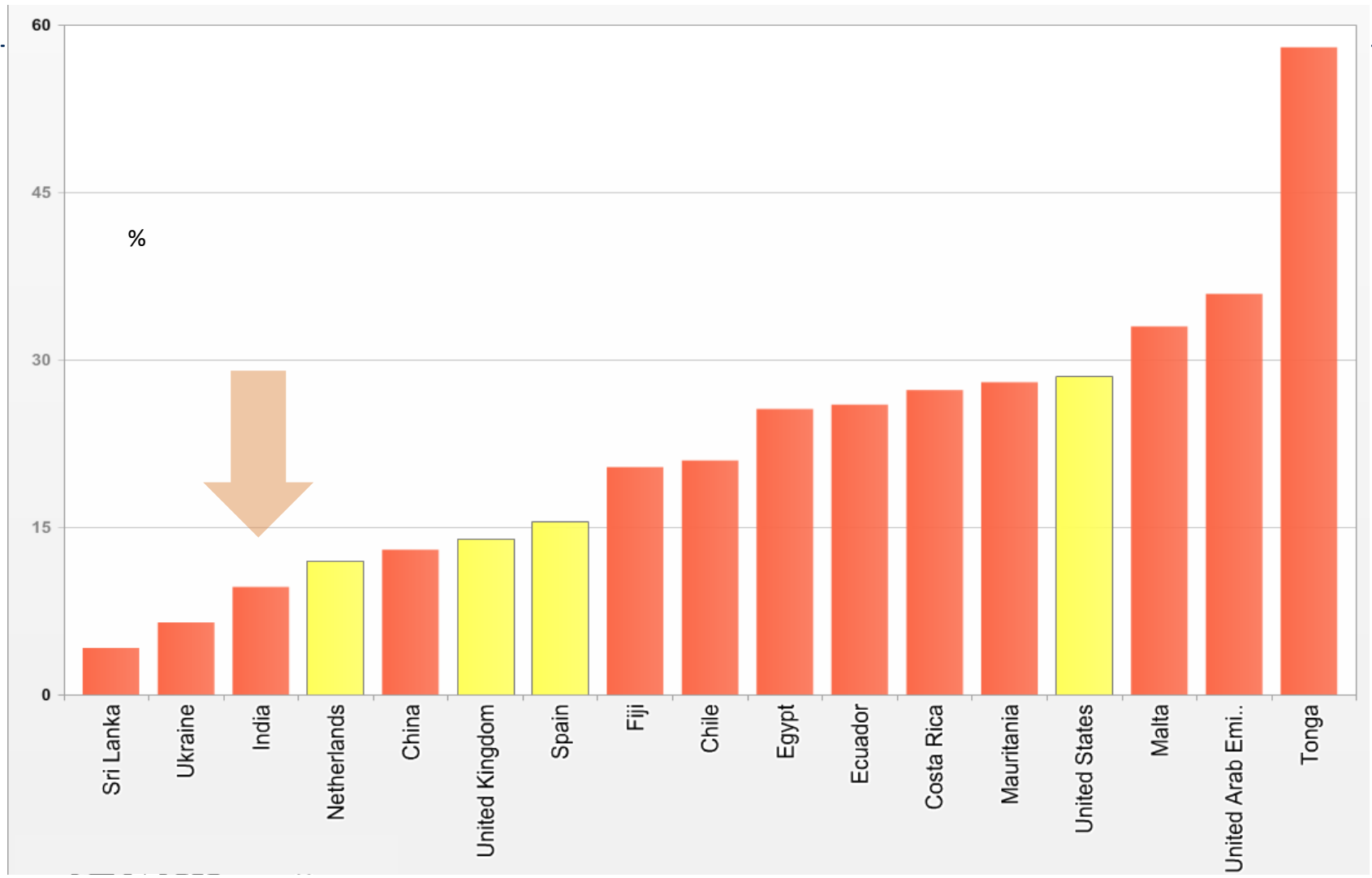
 Injuries  NCDs  Infectious  Maternal

Tobacco use (%) in males 13-15: selected countries

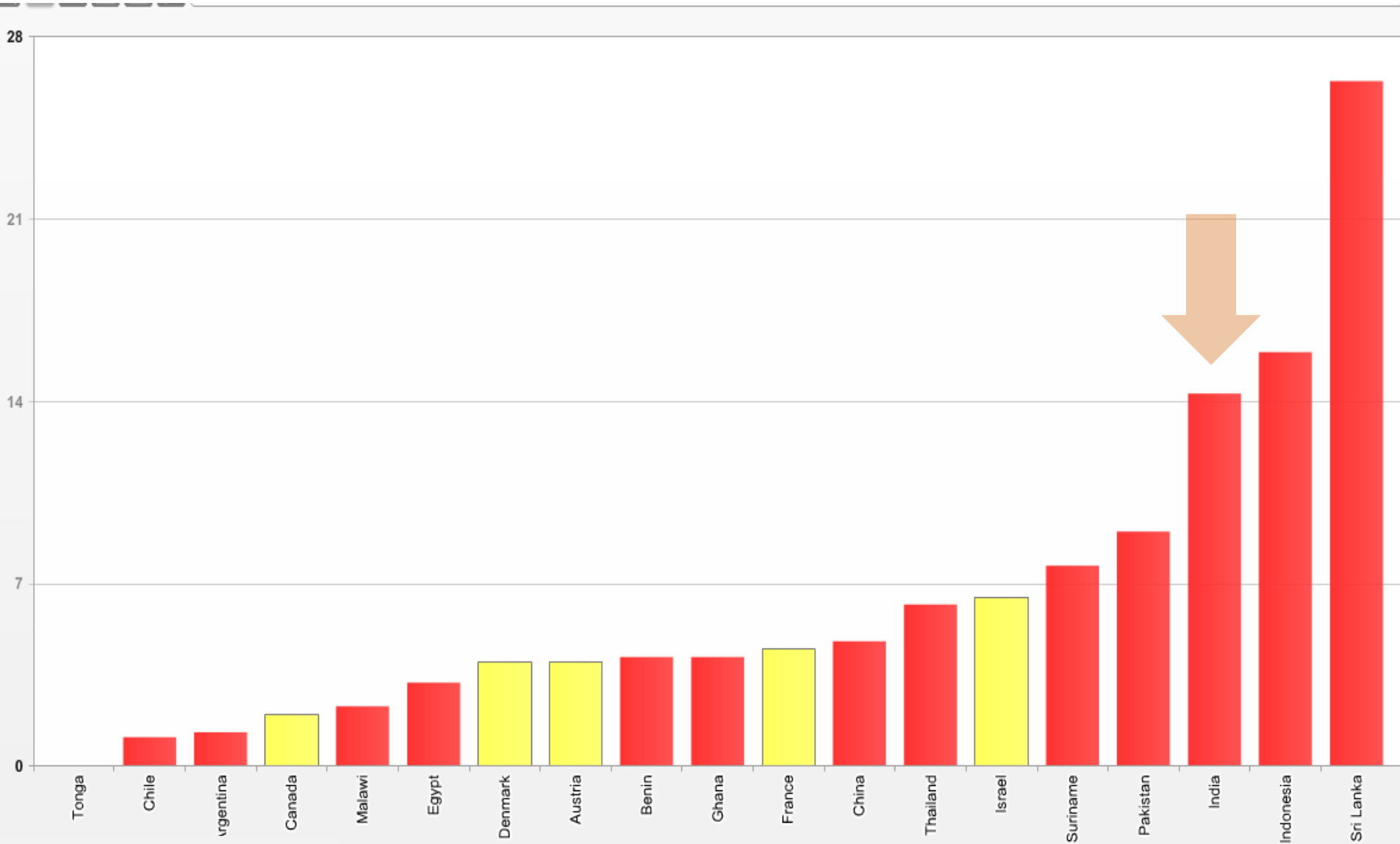


Global health changes: NCD agenda & adolescents

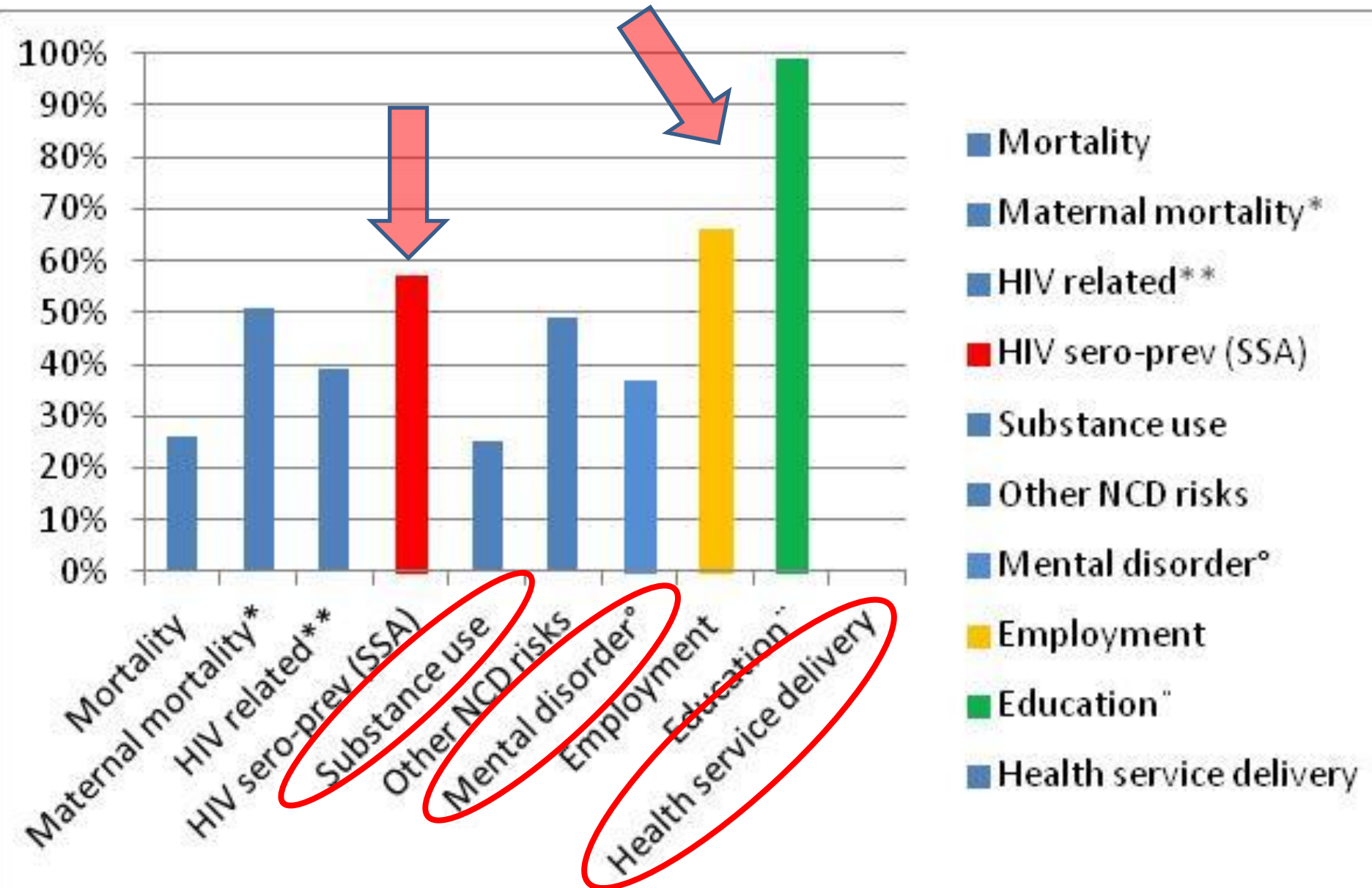
Overweight in females 13-15 yrs



Underweight in girls aged 13-15 years



Visualising adolescent health: global coverage



Social, educational and economic policies

Social
Determin-
inants

Risk &
Protective
Factors

Preconception
& Antenatal

Childhood

Puberty /
Adult transitions

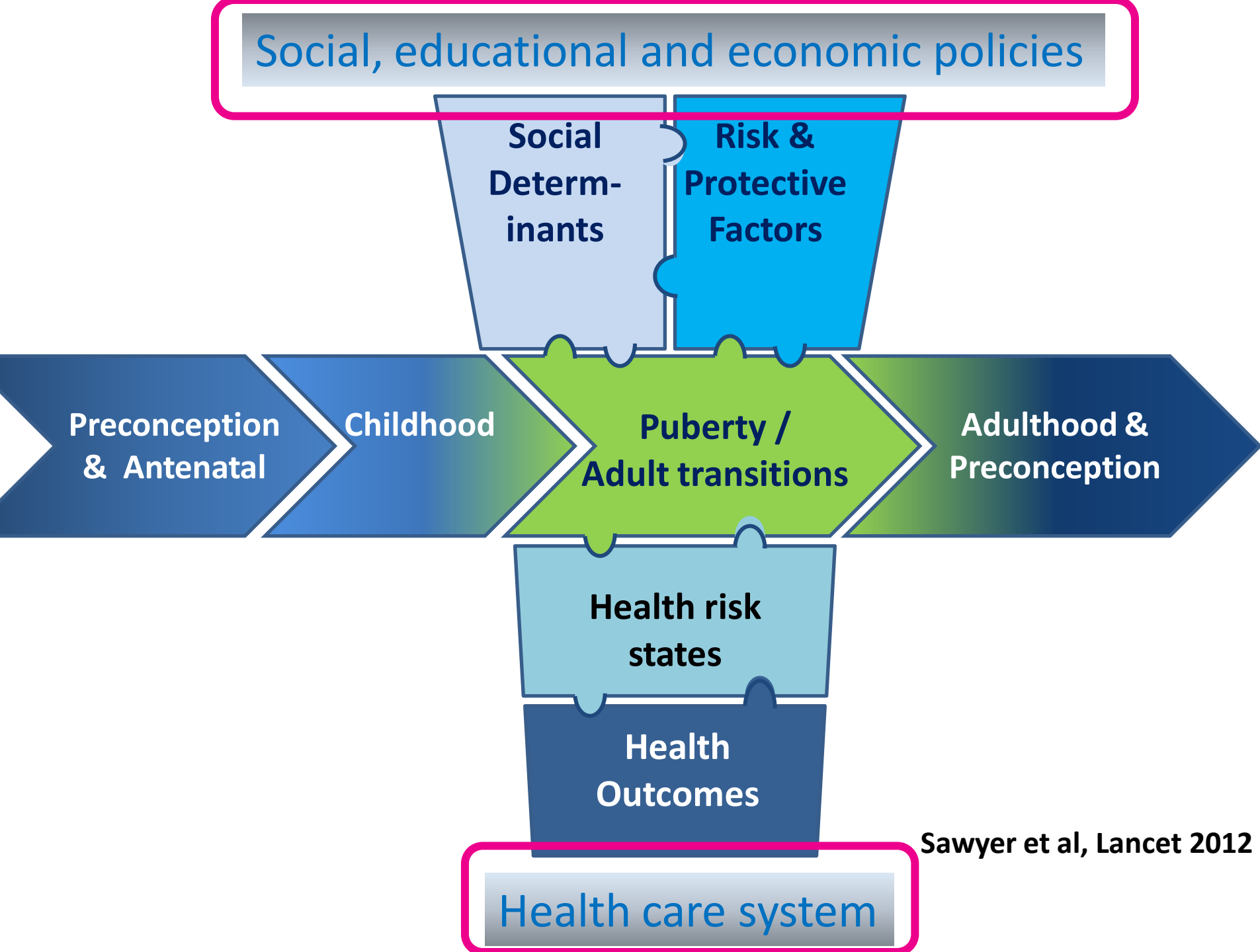
Adulthood &
Preconception

Health risk
states

Health
Outcomes

Health care system

Sawyer et al, Lancet 2012



Reorienting health services

The Royal Children's Hospital, Melbourne

The Adolescent Model of Care

Report on external consultancy March – July 2009



Clinical Professor David Bennett AO FRACP FSAM

Senior Staff Specialist, Department of Adolescent Medicine and Head, NSW Centre for the Advancement of Adolescent Health, The Children's Hospital at Westmead
www.caah.chw.edu.au

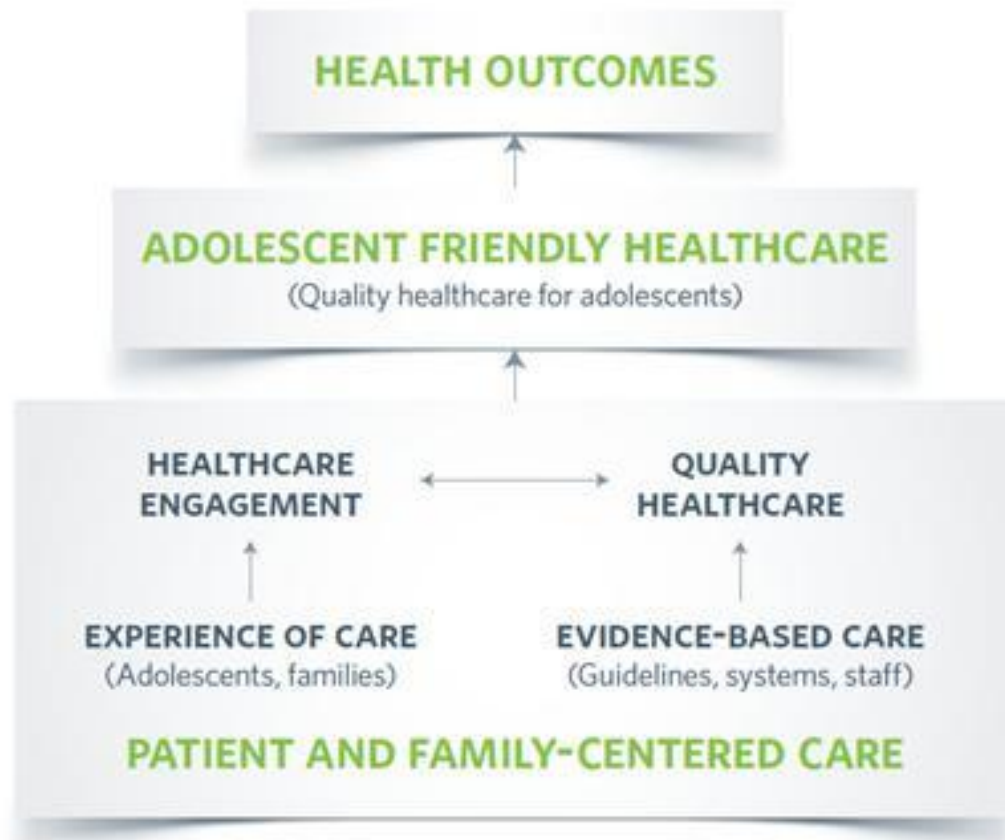
National President, Association for the Wellbeing of Children in Healthcare
www.awch.org.au

Email: davidb3@chw.edu.au
Mobile: 0419 460 513



caah
the children's hospital at Westmead
NSW Centre for the Advancement
of Adolescent Health

The **Royal Children's**
Hospital Melbourne

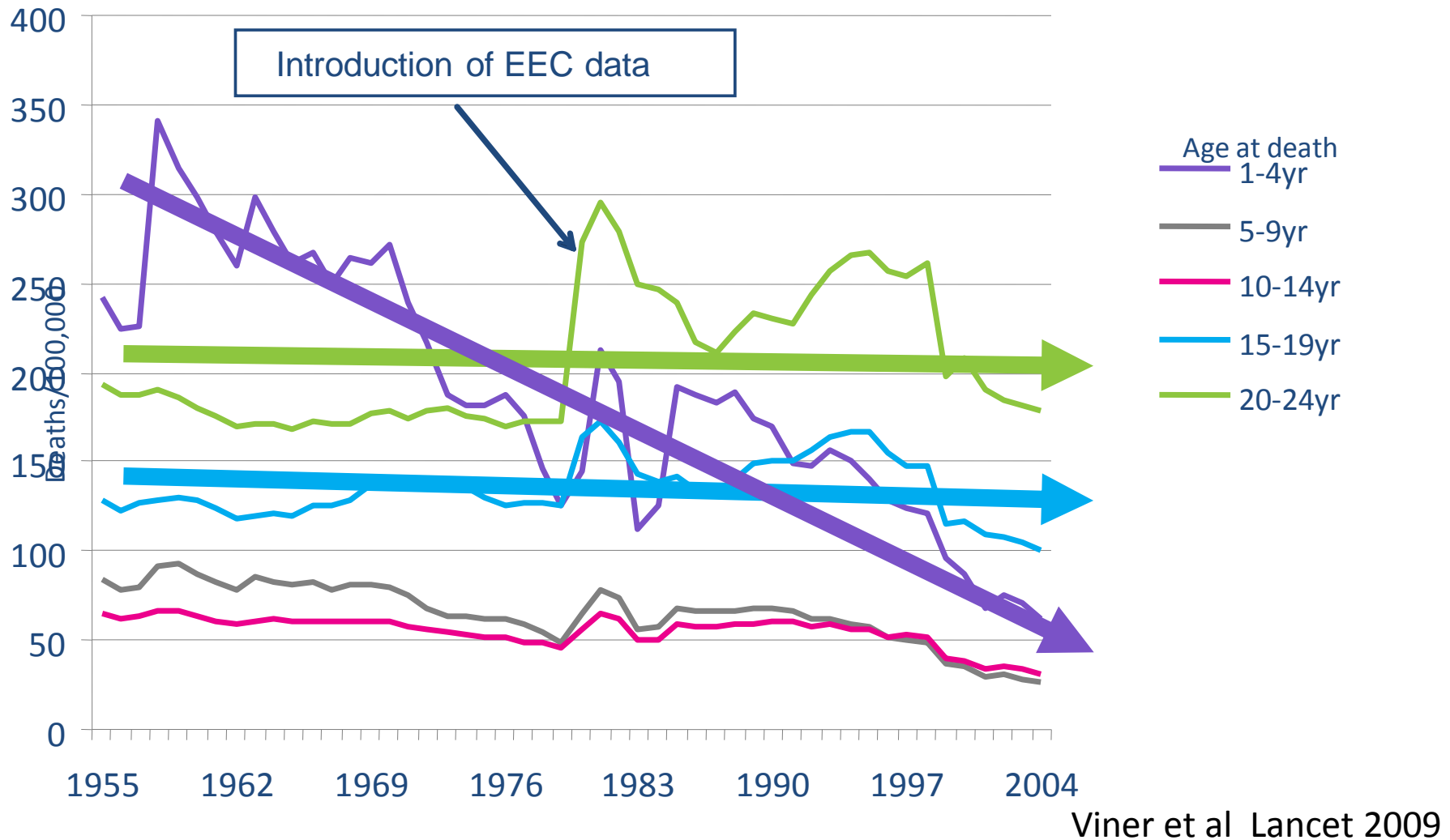


New platforms for prevention

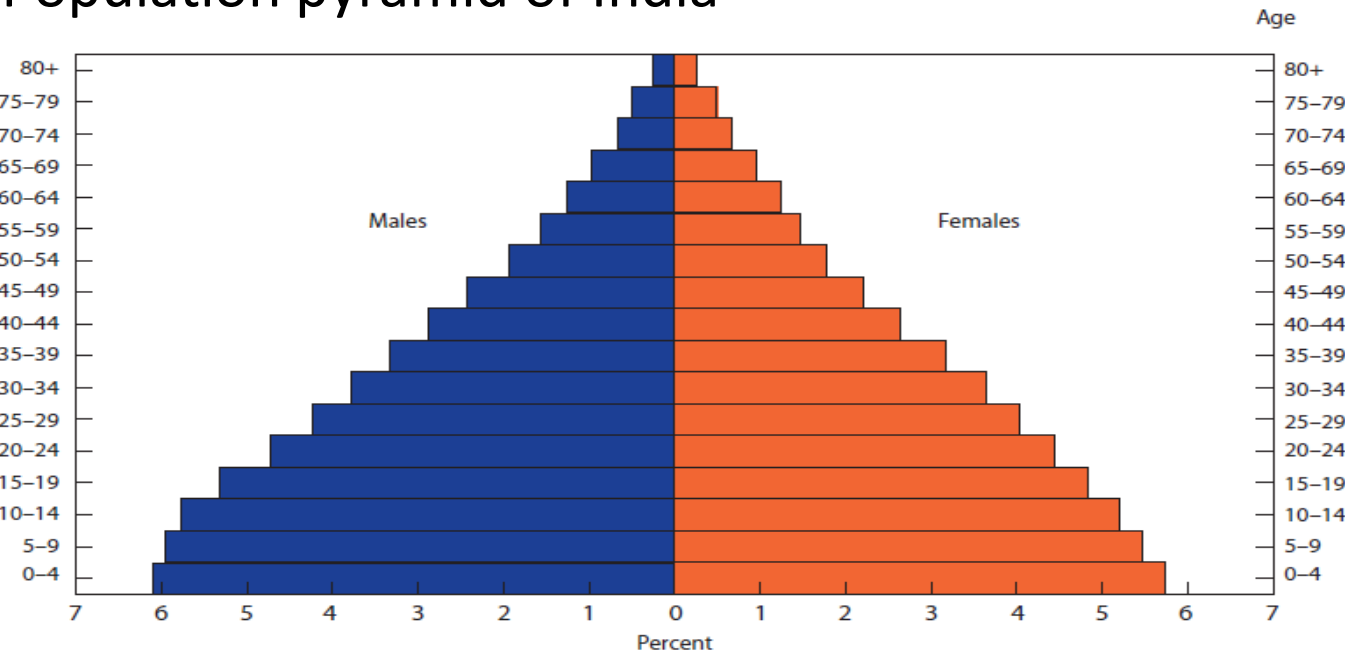


Three economic reasons

Guaranteeing investments in early childhood

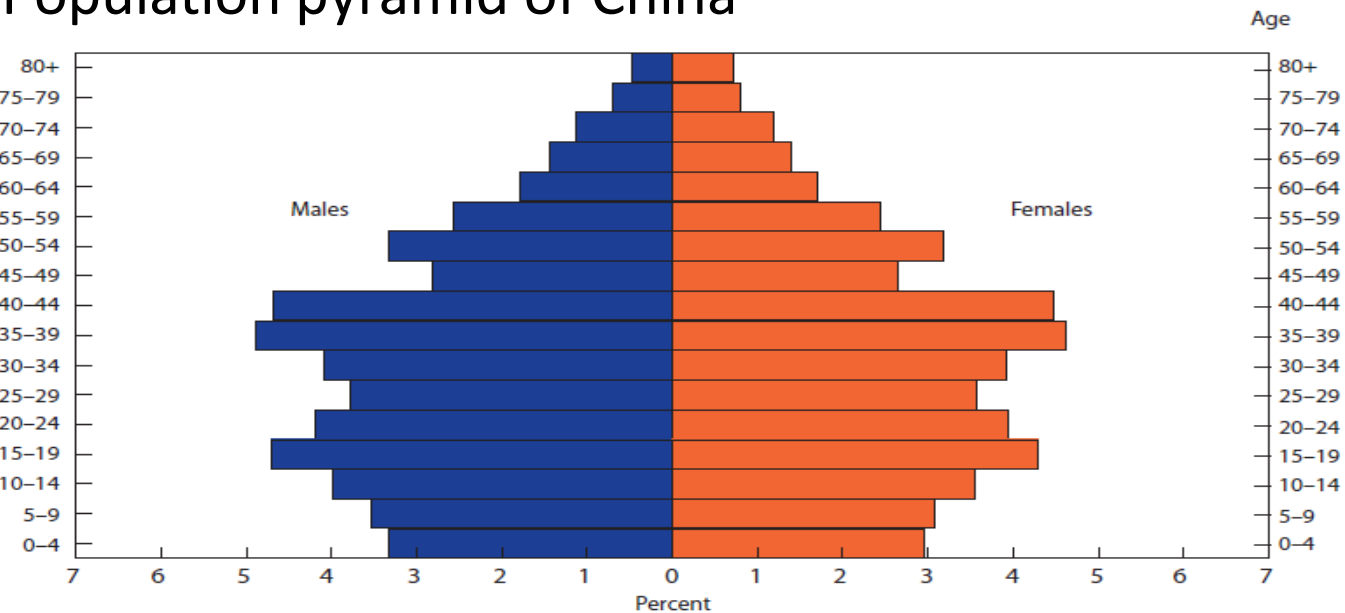


Population pyramid of India



SOURCE: Population Reference Bureau projections, based on the 2001 Census of India.

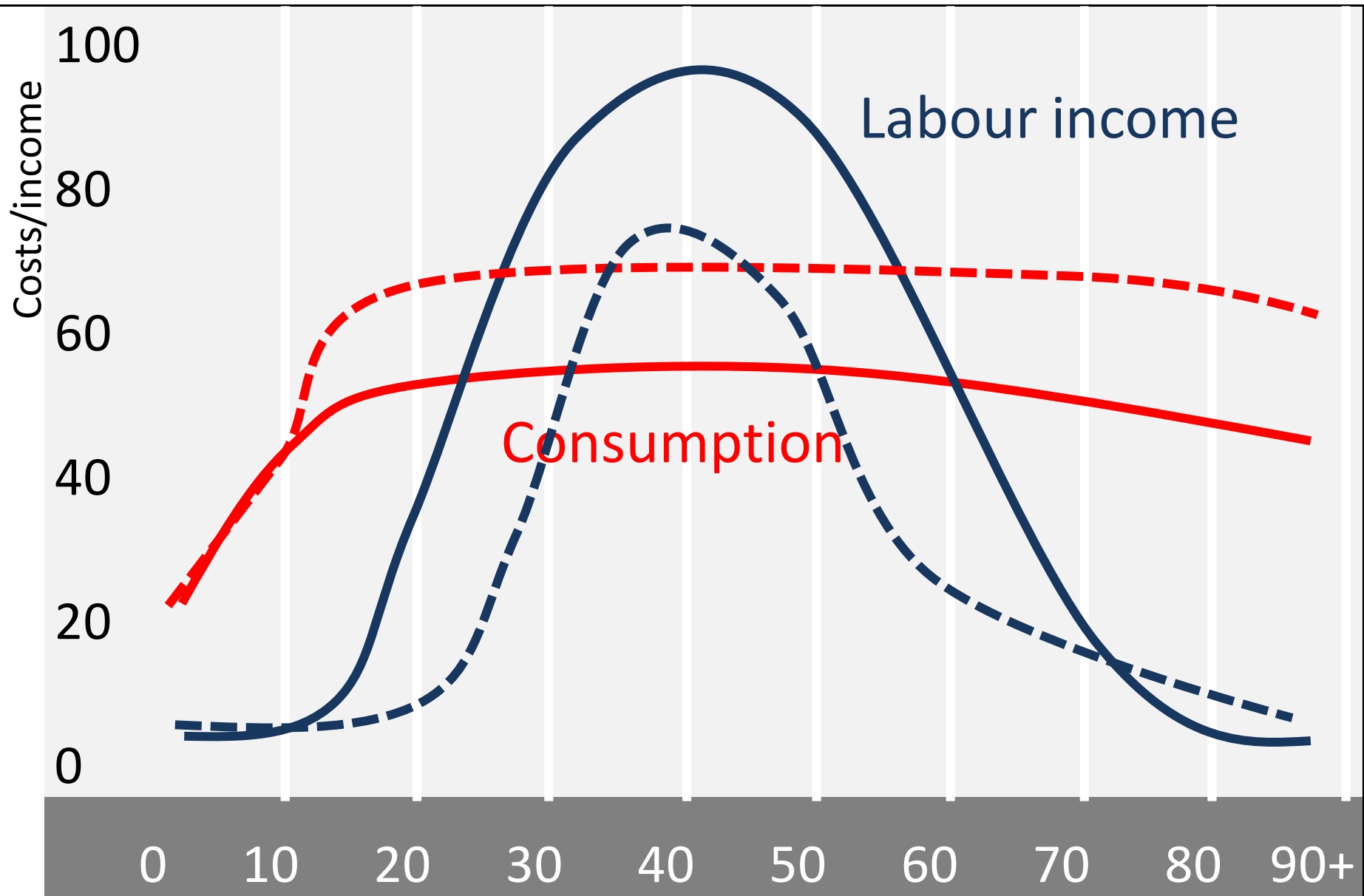
Population pyramid of China

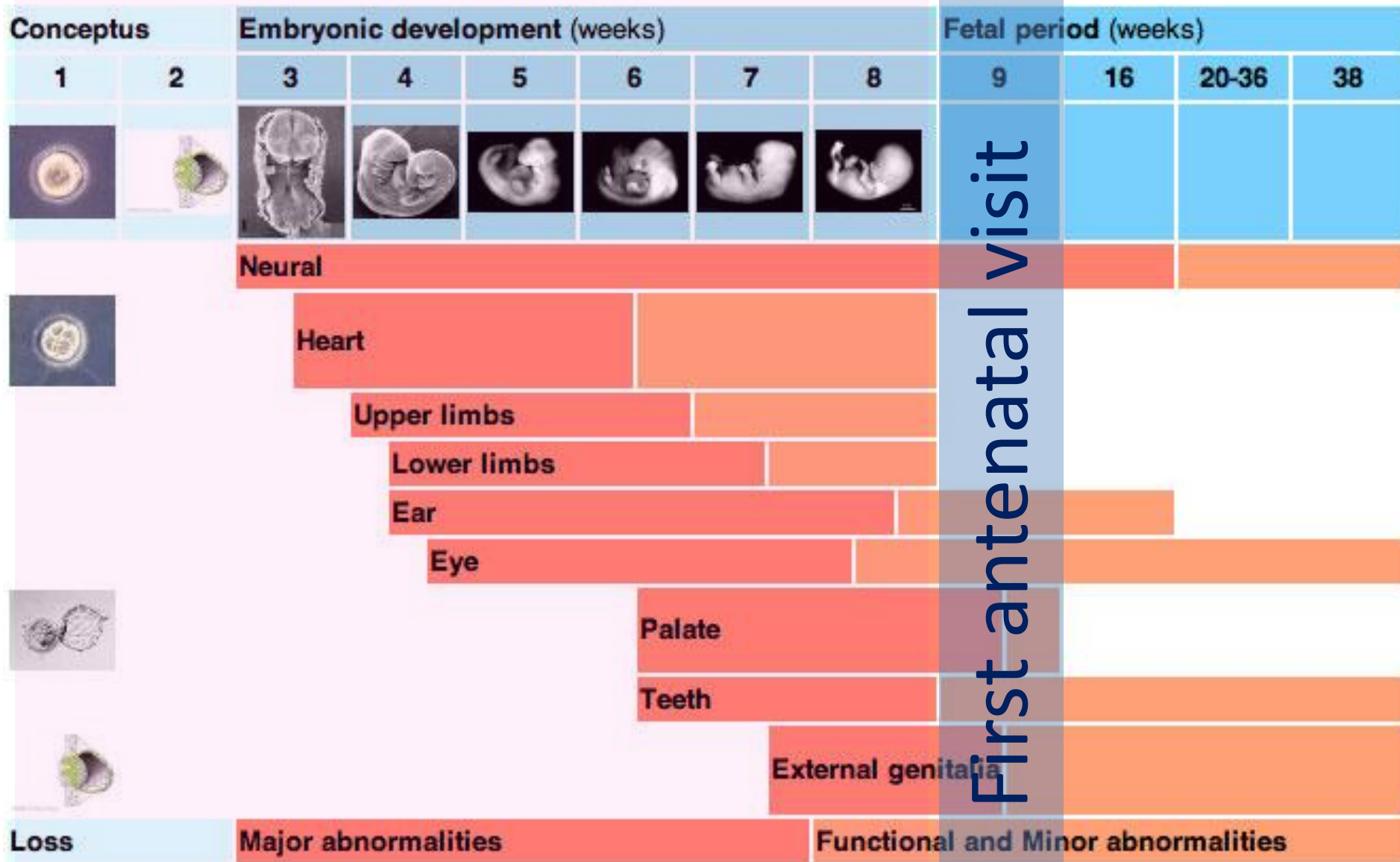


SOURCE: U.S. Census Bureau, International Data Base.

Demographic
Dividend &
Adolescent
Health

Life cycle of workers: typical vs young disabled





First antenatal visit

one in five adolescents are
estimated to have
diagnosable mental health

Motherhood in Childhood

Facing the challenge of
adolescent pregnancy

world development report 2007

DEVELOPMENT AND THE NEXT GENERATION



THE WORLD BANK

NCD ALLIANCE PLAN



for the
**UNITED NATIONS
HIGH LEVEL SUMMIT ON
NON-COMMUNICABLE
DISEASES**
(Summary Version)